

ALLENAIR CLAMPS are rugged, economical units with versatile mounting for such plant applications as clamping, pressing, staking, stamping, bending and positioning. Available in Double Acting and Single Acting (Spring Return) types.

FEATURES: High Tensile Die Cast or Aluminum Bodies, with ground and polished 416 Stainless Steel Piston Rods. The Precision bored bodies add longer life and dependability to the BUNA-N Seals. All 1-1/8" Bore Clamps have sturdy Bronze Rod Bearings, except the AC-1x1, which utilizes the head itself for its bearing. The 2" bore Clamps have low friction, long life Nylon Rod Bearings. 150 P.S.I. maximum pressure. 250°F maximum temperature.

FOR A WIDE RANGE OF ECONOMICAL 3-WAY & 4-WAY 1/8" VALVES SEE PAGES 72, 76 & 86.

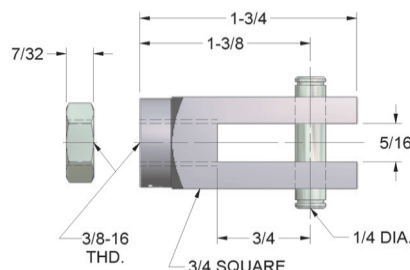
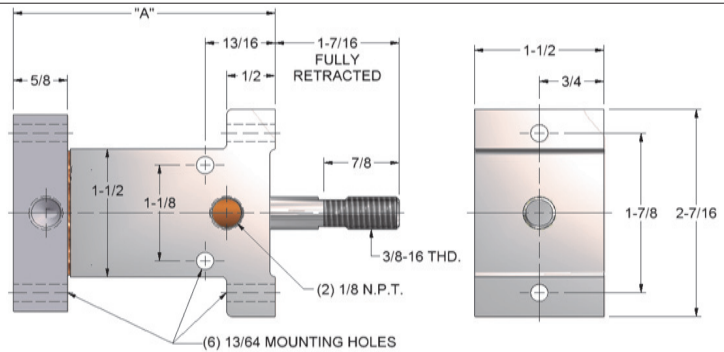
ACD 1-1/8" BORE • DOUBLE ACTING

MODEL	STROKE
ACD-110	1"
ACD-120	2"
ACD-130	3"
ACD-140	4"



ACD - SR 1 1/8" BORE • SPRING RETURN
ACD-SRF: Rod Normally Retracted by Spring.
ACD-SRR: Rod Normally Extended by Spring.
 Spring Force: 15 lbs. at rest; 30 lbs. full stroke

MODEL	STROKE
ACD-SRF-105	1/2"
ACD-SRR-105	1/2"
ACD-SRF-110	1"
ACD-SRR-110	1"
ACD-SRF-115	1-1/2"
ACD-SRR-115	1-1/2"
ACD-SRF-120	2"
ACD-SRR-120	2"



A-145
ROD CLEVIS, NUT & PIN

MODEL	STROKE	"A"
ACD-110	1"	3"
ACD-120	2"	4"
ACD-130	3"	5"
ACD-140	4"	6"
ACD-SRF-105	1/2"	3"
ACD-SRR-105	1/2"	3"
ACD-SRF-110	1"	4"
ACD-SRR-110	1"	4"
ACD-SRF-115	1-1/2"	5"
ACD-SRR-115	1-1/2"	5"
ACD-SRF-120	2"	6"
ACD-SRR-120	2"	6"

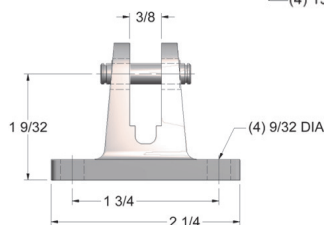
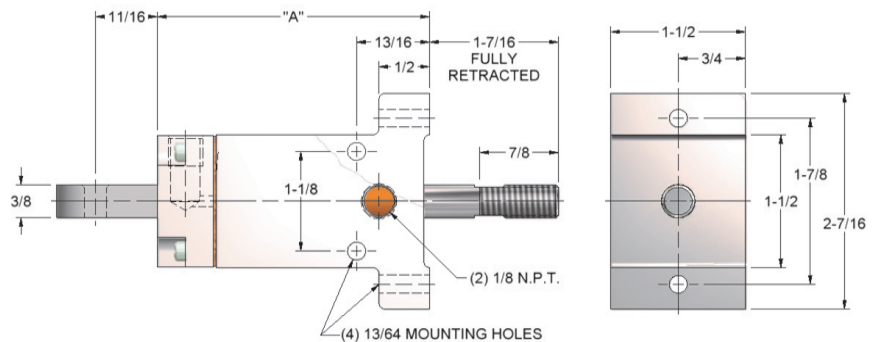
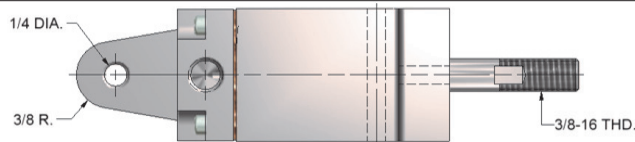
ACDT 1-1/8" BORE • DOUBLE ACTING



MODEL	STROKE
ACDT-110	1"
ACDT-120	2"
ACDT-130	3"
ACDT-140	4"

ACDT - SR 1 1/8" BORE • SPRING RETURN
ACDT-SRF: Rod Normally Retracted by Spring.
ACDT-SRR: Rod Normally Extended by Spring.
 Spring Force: 15 lbs. at rest; 30 lbs. full stroke

MODEL	STROKE
ACDT-SRF-105	1/2"
ACDT-SRR-105	1/2"
ACDT-SRF-110	1"
ACDT-SRR-110	1"
ACDT-SRF-115	1-1/2"
ACDT-SRR-115	1-1/2"
ACDT-SRF-120	2"
ACDT-SRR-120	2"



A-139
SWIVEL BRACKET & PIN

MODEL	STROKE	"A"
ACDT-110	1"	3"
ACDT-120	2"	4"
ACDT-130	3"	5"
ACDT-140	4"	6"
ACDT-SRF-105	1/2"	3"
ACDT-SRR-105	1/2"	3"
ACDT-SRF-110	1"	4"
ACDT-SRR-110	1"	4"
ACDT-SRF-115	1-1/2"	5"
ACDT-SRR-115	1-1/2"	5"
ACDT-SRF-120	2"	6"
ACDT-SRR-120	2"	6"

