

VALVES

• DIRECT ACTING

4-WAY DIRECT ACTING VALVES

AVAILABLE IN A VARIETY OF SOLENOID,
PRESSURE PILOT & BLEED PILOT MODELS

ALLENAIR'S Field Proven High Tensile Manganese Bronze Slider against a hardcoated aluminum slider base (both lapped flat within one light band) help make this a rugged, long life, bubble tight, high flow compact valve.

4-WAY DIRECT ACTING 1/8" N.P.T.

SINGLE SOLENOID

MODEL 4VS FOR SINGLE VALVE



A maintained electrical contact is required to hold the valve in its shifted position. Breaking the electrical contact will return the valve to its original position. (Standard Splice Box Housing is shown above.) For DC voltages see note below.

Voltages: 12, 24, 120 & 240/60 AC and 12 & 24VDC are standard.

Watts: 7

Temperature Range: - 10°F to + 190°F.

Pressures: Vacuum to 150 P.S.I.

Orifice: .078 Dia., Cv .12

Ports: 1/8 N.P.T.

ALLENAIR "TIME-A-VALVE"[®]
See page 85. A solid state Electronic Timer, integral with Allenair Solenoid Operators.

DOUBLE SOLENOID

MODEL 4VD FOR SINGLE VALVE



A momentary or maintained electrical contact applied to one solenoid will shift the valve. It will remain in that position until the other solenoid is energized, which will cause the valve to shift to its original position. If a maintained contact is employed, the first solenoid must be de-energized before the other is energized.

Note for Single Solenoid DC Valves:

For operating pressures of 80-150 P.S.I., a special coil is required, and only Splice Box Housing is available. See Price List for additional charges. For pressures up to 80 P.S.I., maximum all available housings may be had, and the Prefix "8" is to be added to the Model Number.

VALVES

- DIRECT ACTING

4-WAY, DIRECT ACTING 1/8" N.P.T.

PILOT OPERATED

SINGLE AIR PILOT MODEL 4VPS FOR SINGLE VALE

A continuous pilot pressure applied to the valve will hold it in its shifted position. When the pilot pressure is released the valve will shift to its original position. Pilot pressure must be at least 25% of the operating pressure. Minimum operating pressure is 30 P.S.I.

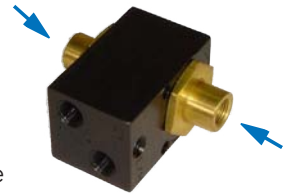
Pilot Pressure Port



DOUBLE AIR PILOT MODEL 4VPD FOR SINGLE VALVE

A momentary or maintained pilot pressure applied to one side of the valve will cause it to shift. It will remain in that position until a pilot pressure is applied to the other side, which will cause the valve to return to its original position. If a maintained pilot pressure is employed, it must be released before the other pilot pressure is applied. Pilot pressure must be at least 25% of the operating pressure.

Pilot Pressure Ports



DOUBLE BLEED PILOT MODEL 4VBL FOR SINGLE VALVE

A separate Bleeder Valve, such as the Allenair BV100 or BV-1/8, must be installed in a line to each bleed port. Depressing one Bleeder Valve momentarily will shift the valve. It will remain in that position until the other Bleeder Valve is depressed, which will cause the valve to shift to its original position.

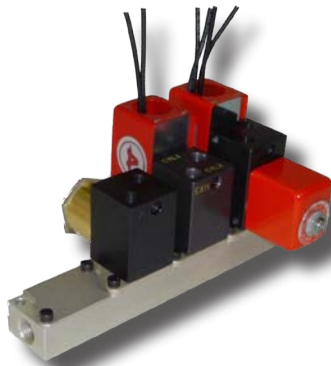
Pilot Bleed Ports



GROUP MOUNTED MODEL GM

Group mounting is a convenient method of mounting two or more valves using a single common inlet port. One or any combination of valves can be used on this group mounting.

SPECIFY: "GM"__ (No. of Stations) for Mounting Base and add the Prefix "GM" to the valves required.



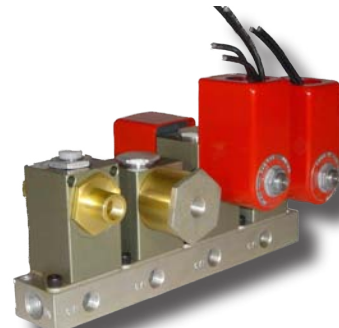
ORDERING EXAMPLE:

- 2) GM-4
 - 8) GM4VS-120/60 mounted on all stations. If a combination of valves is used, designate each valve for each station.
- BLANK COVERS are available for unused stations. Part Number DAV-M8.

MANIFOLD MOUNTED MODEL MM

Manifold mounting reduces cost over individually mounted valves by providing convenient permanent piping of the common inlet and cylinder ports. One or any combination of valves can be used on this manifold mounting.

SPECIFY: "MM"__ (No. of Stations) for Manifold Base and add the Prefix "MM" to the valves required.



ORDERING EXAMPLE:

- 2) MM-4
 - 8) MM4VS-120/60 mounted on all stations. If a combination of valves is used, designate each valve for each station.
- BLANK COVERS are available for unused stations. Part Number DAV-904.

VALVES

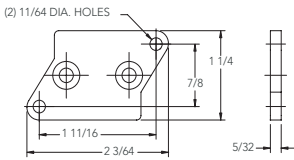
ACCESSORIES

PIPED EXHAUST
PART NUMBER EA-19
(1/8"-N.P.T.)



HORIZONTAL MOUNTING

PART NUMBER
DAV-M6

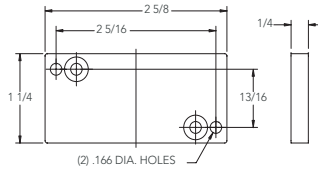


FILTER SILENCER
PART NUMBER EA-27

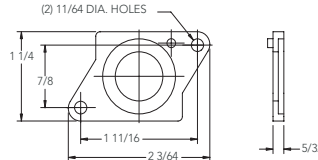


MOUNTING PLATES

PART NUMBER
DAV-132



PART NUMBER
DAV-M5

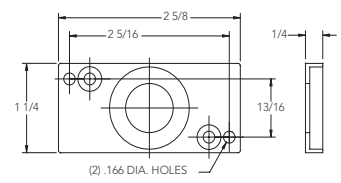


SPEED CONTROL
PART NUMBER QE-104
Single Speed Control for Common Exhaust.



VERTICAL MOUNTING

PART NUMBER
DAV-132-1



OPTIONS

CONDUIT HOUSING
ADD THE SUFFIX LETTER "C"
TO THE CATALOG NUMBER



DIN-type HOUSING
DIN 43650/ISO 4400 ADD
THE SUFFIX LETTER
"YD" TO THE CATALOG
NUMBER. See page 80
for female connectors.

**LOCKING MANUAL
OVER-RIDE LEVER**

Particularly useful for set-up and electrical failure. ADD THE SUFFIX LETTER "O" TO THE CATALOG NUMBER. (Not available on "GM" or vertically mounted valves.)



EXPLOSION-PROOF
"Not available on 4VS-DC
ADD THE PREFIX LETTER "X"
TO THE CATALOG NUMBER.
(Double Solenoid shown)



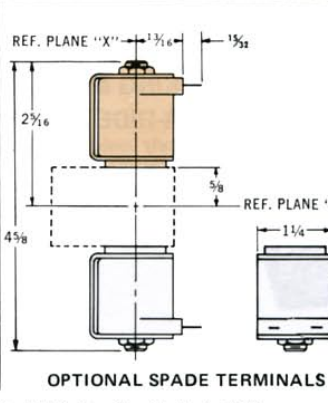
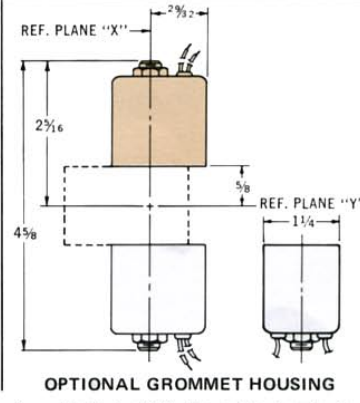
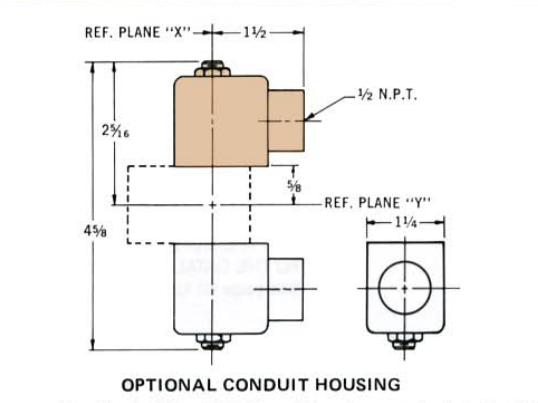
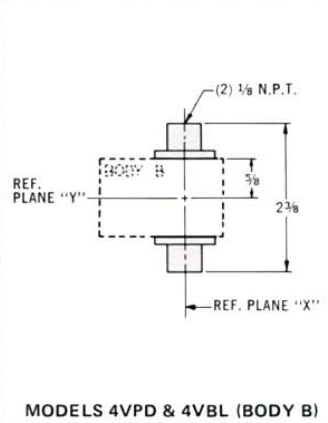
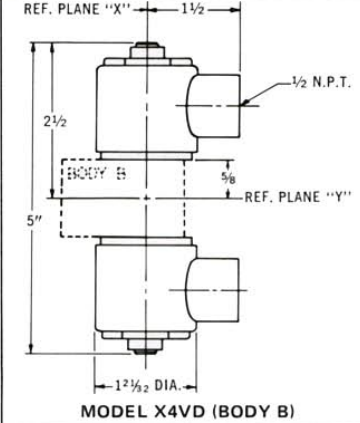
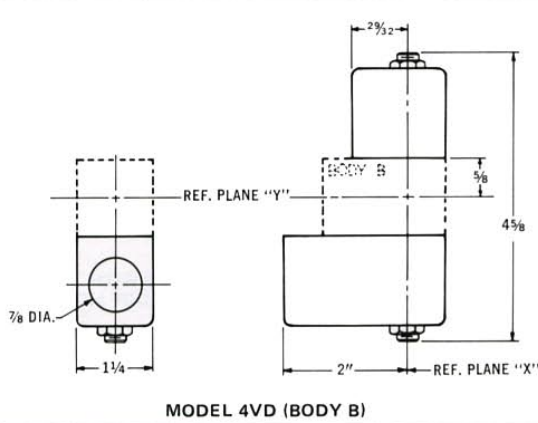
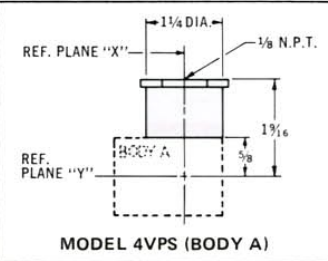
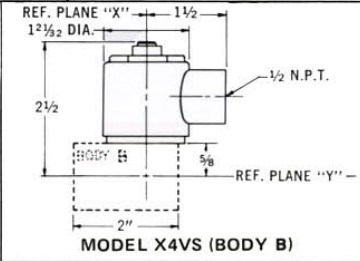
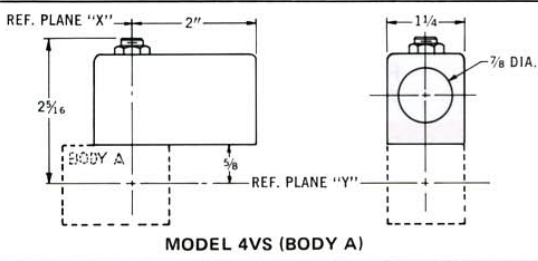
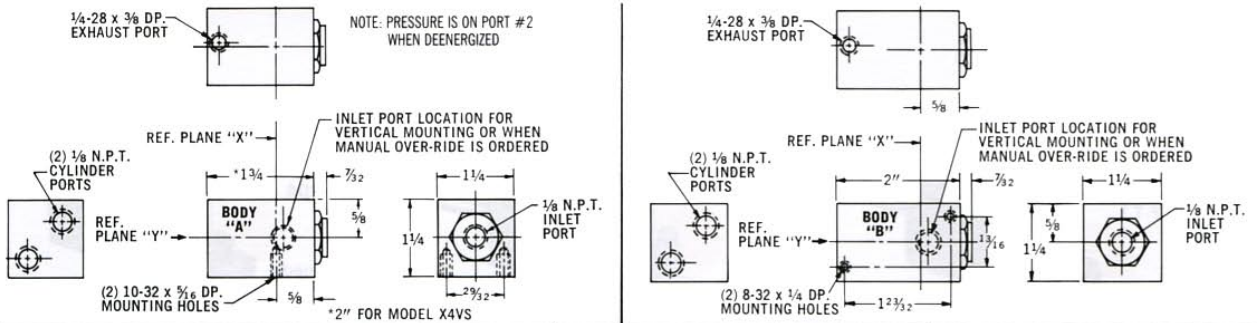
GROMMET HOUSING
ADD THE SUFFIX
LETTER "G" TO THE
CATALOG NUMBER.



SPADE TERMINALS
ADD THE SUFFIX
LETTER "Y" TO THE
CATALOG NUMBER.

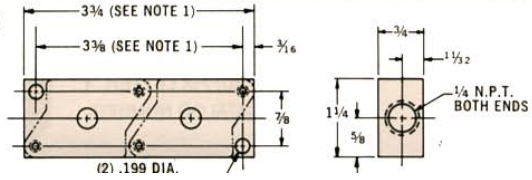


4-WAY DIRECT ACTING 1/8" N.P.T.



For Single Solenoid Optional Housings use shaded side of drawing with Body "A". Use entire drawing for Double Solenoid with Body "B".

GROUP AND MANIFOLD MOUNTING BASE



1. Dimensions shown are for mounting two valves. For each additional valve, add 1-11/16" to these dimensions.
2. Additional mounting holes are provided when three or more valves are used. Mounting holes will be located under valve bodies.
3. On manifold base all cylinder ports are 1/8 N.P.T.