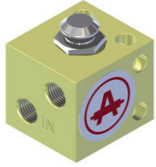


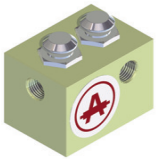
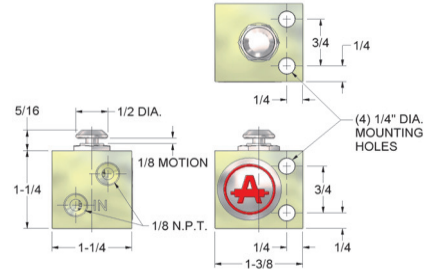
1/8" POPPET VALVES

1/8" POPPET TYPE-VALVES provide a complete line of economical, compact, trouble-free units. They are available in a wide variety of manually operated 2-way, 3-way and 4-way models. The valve bodies are corrosion resistant aluminum. All other parts are treated or plated to provide long service and resist corrosion. The poppet seal is Buna-N. Air flow capacity is 25 Cu. Ft. free air per minute at 100 P.S.I. Maximum operating pressure is 150 P.S.I. Maximum temperature range is 250°F.

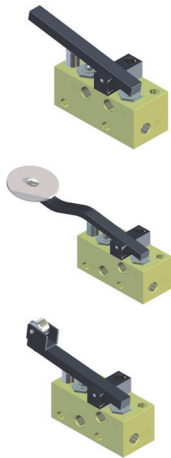
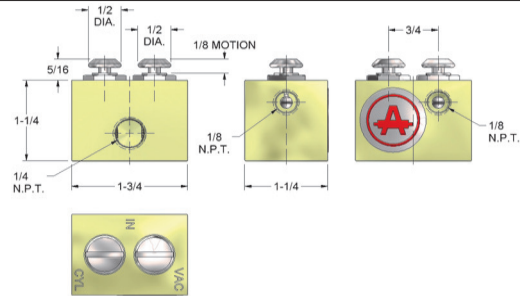


V2 TWO-WAY BUTTON VALVE
Depressing button will permit flow.
May be mounted on any one of three sides.

V23 THREE-WAY BUTTON VALVE
Depressing button will permit flow. Releasing button will permit exhaust flow through button stem.

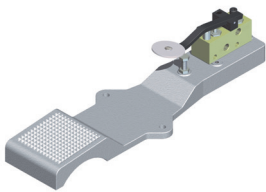
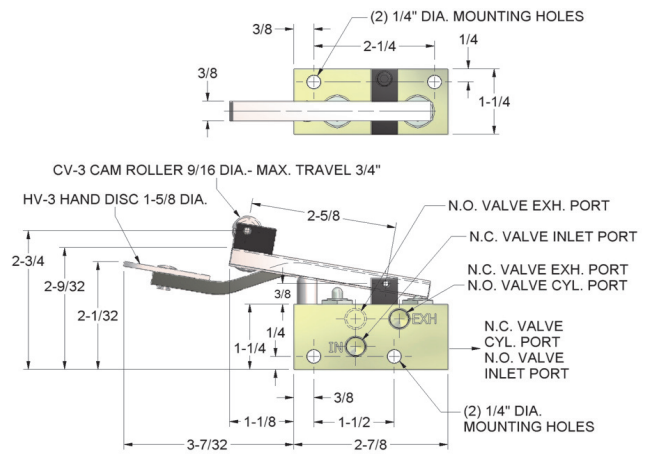


V2H TWO WAY TWO BUTTON VALVE
One common inlet Two separate outlets.

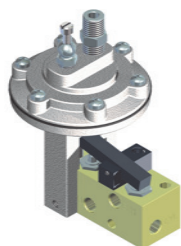
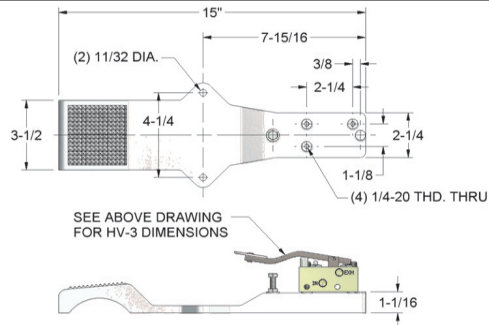


THREE-WAY VALVES
During operation, air will not escape to atmosphere. Lever bearings are of hardened steel for long service. The utilizable exhaust port will accept our Bleed Control Valve PTV305 for controlling the exhaust. Can be mounted on either of two sides.

- LEVER OPERATED**
V3NC THREE-WAY NORMALLY CLOSED
V3NO THREE-WAY NORMALLY OPEN
HAND OPERATED
HV3NC THREE-WAY NORMALLY CLOSED
HV3NO THREE-WAY NORMALLY OPEN
CAM OPERATED
CV3NC THREE-WAY NORMALLY CLOSED
CV3NO THREE-WAY NORMALLY OPEN

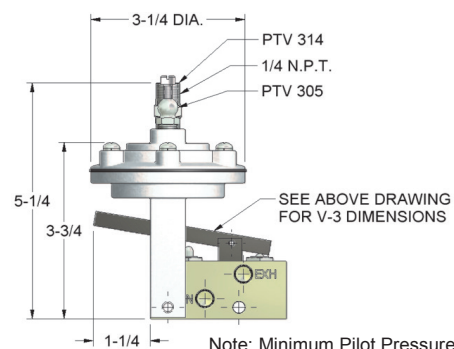


FOOT OPERATED
FT300NC THREE-WAY NORMALLY CLOSED
FT300NO THREE-WAY NORMALLY OPEN



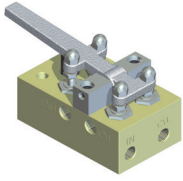
PILOT TIMER VALVE
PTV3NC THREE-WAY NORMALLY CLOSED
PTV3NO THREE-WAY NORMALLY OPEN

Valve consists of a diaphragm pilot chamber which operates the 3-way valve section. A momentary pilot pressure feeds air into the pilot chamber through Check Valve PTV314 depressing the lever of modified V3 Valve. As air escapes from the pilot chamber through the Adjustable Bleed Control Valve (PTV305) the lever rises to its original position. Max. delay is 60 seconds



Note: Minimum Pilot Pressure 20 P.S.I.

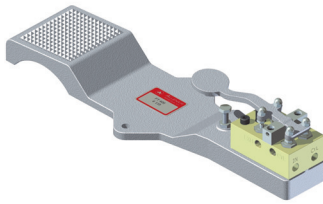
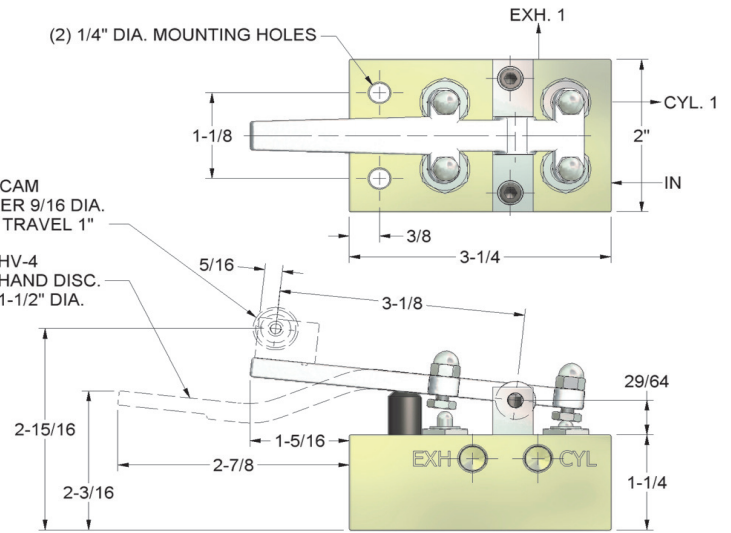
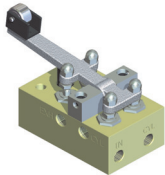
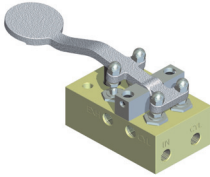
1/8" VALVES CONTINUED



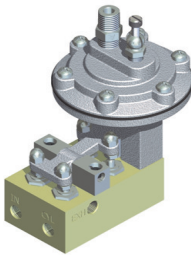
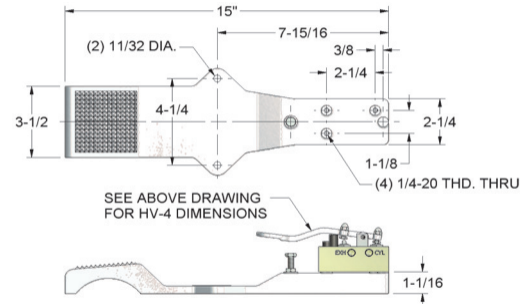
FOUR-WAY VALVES

Used for actuating Double Acting Cylinders. The utilizable exhaust ports will accept our Bleed Control Valve (PTV305) for controlling the speed of the forward and return strokes.

- V4** FOUR-WAY LEVER OPERATED
- HV4** FOUR-WAY HAND OPERATED
- CV4** FOUR-WAY CAM OPERATED

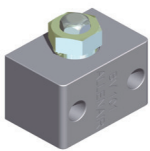
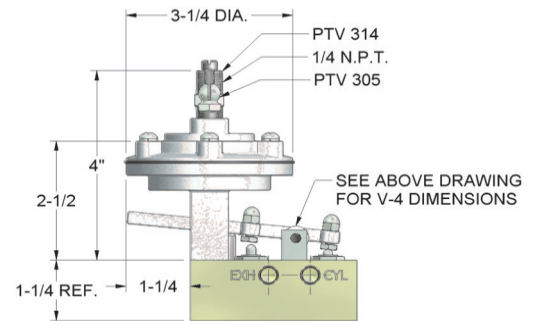


FT400 FOUR-WAY FOOT OPERATED



PILOT TIMER VALVE

PTV4 FOUR-WAY
Valve consists of a diaphragm pilot chamber which operates a 4-way valve section. A momentary pilot pressure feeds air into pilot chamber through Check Valve PTV314 depressing valve lever. As air escapes from the pilot chamber through the Adjustable Bleed Control Valve (PTV305) the lever rises, shifting valve to its original position. Maximum delay is 60 seconds.
Note: Minimum Pilot Pressure 20 P.S.I.



BV100 - BLEEDER VALVE 1/8" N.P.T.
Designed to be used wherever air pressure must be bled off such as the control of "Atmosphere Bleed" 4-way Pilot Valves. 1/8" N.P.T. Port is located on bottom of block.



SC100 - FLOW CONTROL VALVE 1/4" N.P.T.
This brass body valve provides control in one direction and free flow in reverse. Both ports are 1/4" N.P.T.

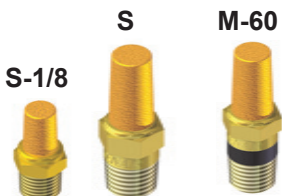


BV - 1/8" BUTTON BLEEDER VALVE 1/8" N.P.T.
Designed for same purpose as BV-100 above. This valve has a 1/8" male pipe thread. The body is brass, with an aluminum button.



PTV305 - BLEED CONTROL VALVE 1/8" N.P.T.
This valve permits control of air flow from any exhaust port to atmosphere.

Body is steel, plated for corrosion resistance with stainless steel adjusting screw.



S - SINTERED BRONZE FILTER SILENCER
M - 60 NON CLOGGING SINTERED BRONZE FILTER-SILENCER

See page 52 for full description.



PTV314 - CHECK VALVE 1/4" N.P.T.
This zinc plated brass valve allows flow in one direction only.
Maximum Pressure: 150 P.S.I.
Cracking Pressure: 20 P.S.I.

